

**ENROLLMENT SUMMARY REPORT  
FALL 2009**

Dr. La Shonda Carter-Boone  
Senior Institutional Research Analyst

Office of Institutional Research & Planning  
714 Lewis Hall  
University of Missouri System

December 2009

IR&P 2009, Report 6

<http://www.umsystem.edu/ums/departments/fa/planning/>



## Technical Notes

These tables provide counts of students enrolled in the fall of 2009 on-schedule credit courses at the four campuses of the University of Missouri. Five and ten-year trend data are included in the tables for comparison purposes. The data used in this report were generated from the EMSAS Fall Enrollment files, which are submitted to the Missouri Department of Higher Education (MDHE) each fall. Data included in EMSAS files were prepared in the admissions and registration offices at the respective campuses. The data are counts as of the census date at each campus, which is defined as the end of the fourth week of classes for the fall session. The source data are based on the reporting guidelines and definitions of the Missouri Department of Higher Education (MDHE) and the National Center for Educational Statistics (NCES).

Tables in the Table 2 series (2.0-2.4) include counts of on- and off-campus students. The columns titled "On-Campus", according to the MDHE guidelines, include students enrolled geographically on campus and students in the Graduate Engineering (Residence) Centers. All other students are counted in the columns headed "Off-Campus", which include students enrolled in extension courses and students that receive H.S. advanced credit from the Kansas City and St. Louis campuses. The tables of the Table 2 series also include full-time equivalence (FTE) counts.

Tables in the Table 4 series (4.0a-4.4b) include counts of resident and non-resident students by level and course load (full-time vs. part-time).

### Definitions of FTE:

Undergraduate FTE = Total Student Credit Hours/15

Graduate FTE = Total Student Credit Hours/12

Dentistry FTE = Headcount

Law FTE = Total Student Credit Hours/15

UMC Medicine FTE = Headcount

UMKC Medicine FTE = Headcount

Optometry FTE = Headcount

Pharmacy FTE = Headcount

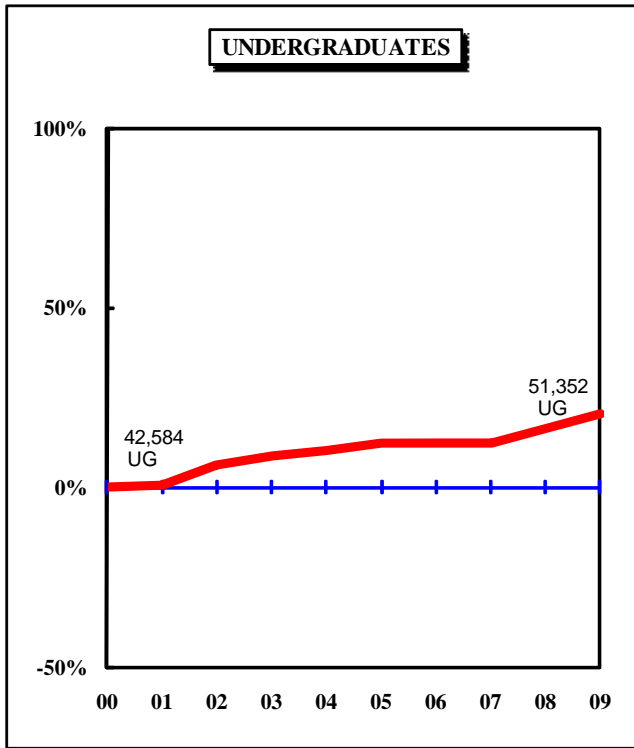
Vet Medicine FTE = Headcount

## Caveats

First- and second-year students in the Medicine MD program at UMKC are included in the undergraduate counts of the Table 2 and Table 4 series.

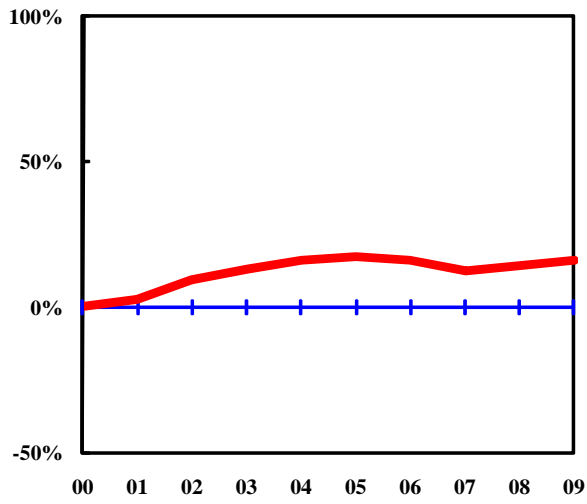
Enrollment counts for students in "Off-Schedule" courses, which include intersession courses, short courses, Video Credit courses, and other courses which begin and end on dates other than those for the regular academic semester, are accumulated during the term in which the courses began and are reported the semester following their end date.

**Figure 1.0: Rate of Change in Fall Headcount by Student Level and Campus,  
Fall 2000 to Fall 2009  
UNIVERSITY OF MISSOURI SYSTEM**

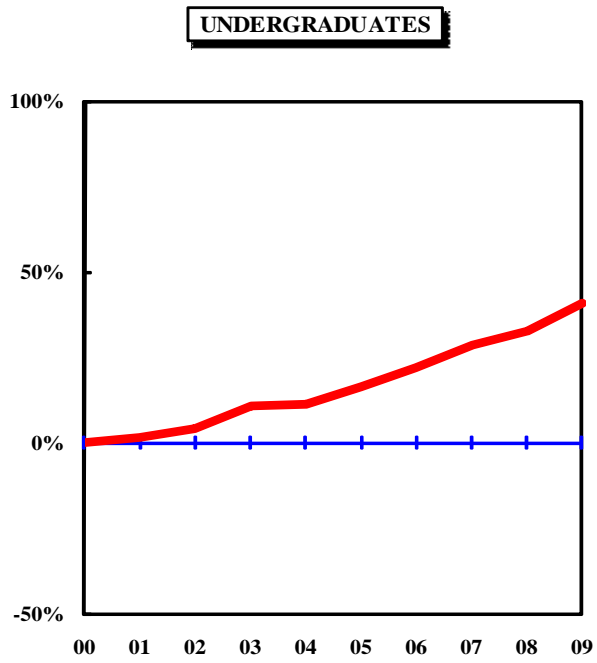


**Figure 1.1: Rate of Change in Fall Headcount by Student Level and Campus,  
Fall 2000 to Fall 2009**

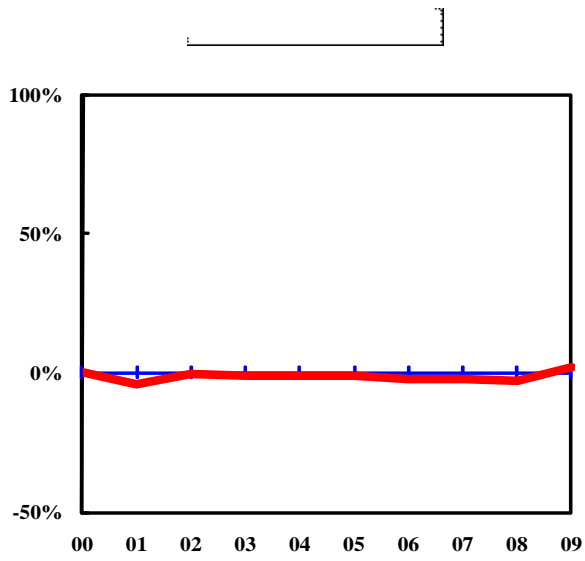
**Figure 1.2: Rate of Change in Fall Headcount by Student Level and Campus,  
Fall 2000 to Fall 2009  
UNIVERSITY OF MISSOURI-KANSAS CITY**



**Figure 1.3: Rate of Change in Fall Headcount by Student Level and Campus,  
Fall 2000 to Fall 2009  
MISSOURI S&T**



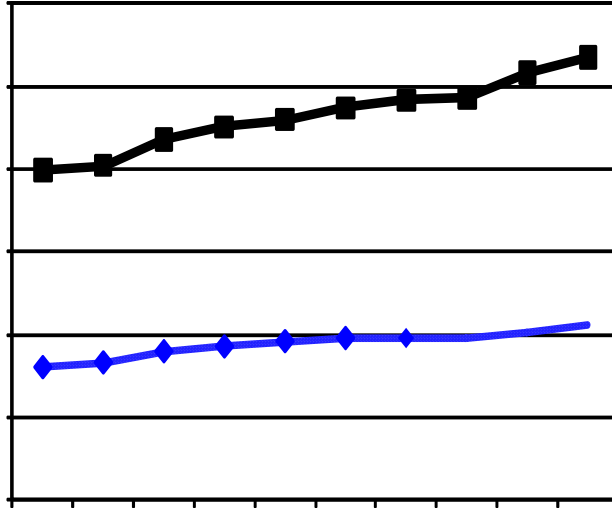
**Figure 1.4: Rate of Change in Fall Headcount by Student Level and Campus,  
Fall 2000 to Fall 2009  
UNIVERSITY OF MISSOURI-ST. LOUIS**





**Table 1. Headcount History by Student Level and Campus, Fall 2000 to Fall 2009**

<b>Campus</b>	<b>Level</b>	<b>2000</b>	<b>2001</b>	<b>2002</b>	<b>2003</b>	<b>2004</b>	<b>2005</b>	<b>2006</b>	<b>2007</b>	<b>2008</b>	<b>2009</b>	<b>10 yr. Change</b>
Columbia	Undergraduate	18,058	18,431	19,698	20,441	20,883	21,335	21,484	21,586	22,980	23,799	32%
	Professional	1,155	1,162	1,146	1,109	1,069	1,083	1,102	1,111	1,126	1,150	0%
	Graduate	4,096	4,074	5,280	5,255	5,051	5,512	5,598	5,708	6,024	6,288	54%
	Total	23,309	23,667	26,124	26,805	27,003	27,930	28,184	28,405	30,130	31,237	34%
Kansas City	Undergraduate	8,091	8,299	8,870	9,167	9,393	9,487	9,383	9,094	9,261	9,381	16%
	Professional	1,341	1,390	1,444	1,435	1,494	1,523	1,509	1,548	1,569	1,623	21%
	Graduate	3,266	3,280	3,567	3,624	3,369	3,296	3,321	3,800	3,651	3,795	16%
	Total*	12,698	12,969	13,881	14,226	14,256	14,306	14,213	14,442	14,481	14,799	17%





**Table 2.1 Headcounts, Full-time Equivalence, and Student Credit Hours by Location, Fall 2005 to Fall 2009**

	<b>Columbia</b>															5-yr. Change
	<u>On-Campus</u>					<u>Off-Campus</u>					<u>Total</u>					
	FS05	FS06	FS07	FS08	FS09	FS05	FS06	FS07	FS08	FS09	FS05	FS06	FS07	FS08	FS09	
<b>Headcount by Student Level</b>																
<b>Undergraduate</b>																
Fresh & Soph DS	10,633	10,501	10,609	11,631	12,069	9	10	14	22	25	10,642	10,511	10,623	11,653	12,094	14%
Junior & Senior DS	10,268	10,588	10,637	10,827	11,247	108	105	126	168	187	10,376	10,693	10,763	10,995	11,434	10%
Nondegree	<u>225</u>	<u>209</u>	<u>180</u>	<u>229</u>	<u>200</u>	<u>92</u>	<u>71</u>	<u>20</u>	<u>103</u>	<u>71</u>	<u>317</u>	<u>280</u>	<u>200</u>	<u>332</u>	<u>271</u>	-15%
Total Undergraduate	21,126	21,298	21,426	22,687	23,516	209	186	160	293	283	21,335	21,484	21,586	22,980	23,799	12%
<b>First Professional</b>																
Law (JD)	444	456	458	453	444	0	0	0	0	0	444	456	458	453	444	0%
Medicine (MD)	372	375	375	387	385	0	0	0	0	0	372	375	375	387	385	3%
Vet. Med. (DVM)	<u>267</u>	<u>271</u>	<u>278</u>	<u>286</u>	<u>321</u>	<u>0</u>	<u>0</u>	<u>0</u>	<u>0</u>	<u>0</u>	<u>267</u>	<u>271</u>	<u>278</u>	<u>286</u>	<u>321</u>	20%
Total First Professional	1,083	1,102	1,111	1,126	1,150	0	0	0	0	0	1,083	1,102	1,111	1,126	1,150	6%
<b>Graduate</b>																
Masters & Ed. Spec.	2,196	2,160	2,192	2,261	2,243	695	800	914	962	1,238	2,891	2,960	3,106	3,223	3,481	20%
Doctoral	1,990	2,019	2,029	2,051	2,172	82	82	78	81	85	2,072	2,101	2,107	2,132	2,257	9%
Nondegree	<u>223</u>	<u>185</u>	<u>215</u>	<u>250</u>	<u>166</u>	<u>326</u>	<u>352</u>	<u>280</u>	<u>419</u>	<u>384</u>	<u>549</u>	<u>537</u>	<u>495</u>	<u>669</u>	<u>550</u>	0%
Total Graduate	4,409	4,364	4,436	4,562	4,581	1,103	1,234	1,272	1,462	1,707	5,512	5,598	5,708	6,024	6,288	14%
<b>Grand Total Headcount</b>																
	26,618	26,764	26,973	28,375	29,247	1,312	1,420	1,432	1,755	1,990	27,930	28,184	28,405	30,130	31,237	12%
<b>FTE Enrollments by Student Level</b>																
Undergraduate	19,372	19,712.3	19,785.3	21,097.0	21,837.7	68	68.3	61.3	99.7	105.0	19,440	19,781	19,847	21,197	21,943	13%
First Professional	1,066	1,083.4	1,093.8	1,108.2	1,134.3	0	0.0	0.0	0.0	0.0	1,066	1,083	1,094	1,108	1,134	6%
Graduate	<u>2,770</u>	<u>2,820.9</u>	<u>2,815.4</u>	<u>2,951.1</u>	<u>2,996.1</u>	<u>428</u>	<u>497.8</u>	<u>524.6</u>	<u>584.3</u>	<u>724.3</u>	<u>3,198</u>	<u>3,319</u>	<u>3,340</u>	<u>3,535</u>	<u>3,720</u>	16%
Total FTE	23,208	23,616.6	23,694.5	25,156.3	25,968.2	495	566.1	585.9	683.9	829.3	23,703.6	24,182.7	24,280.4	25,840.2	26,797.4	13%
<b>SCH Produced by Student Level</b>																
Undergraduate	290,581	295,684	296,780	316,455	327,566	1,016	1,025	919	1,495	1,575	291,597	296,709	297,699	317,950	329,141	13%
First Professional	17,050	17,792	17,256	16,596	17,899	0	0	0	0	0	17,050	17,792	17,256	16,596	17,899	5%
Graduate	<u>33,241</u>	<u>33,851</u>	<u>33,785</u>	<u>35,413</u>	<u>35,954</u>	<u>5,130</u>	<u>5,973</u>	<u>6,295</u>	<u>7,011</u>	<u>8,691</u>	<u>38,371</u>	<u>39,824</u>	<u>40,080</u>	<u>42,424</u>	<u>44,645</u>	16%
Total SCH	340,872	347,327	347,821	368,463	381,418	6,146	6,998	7,214	8,506	10,266	347,018	354,325	355,035	376,969	391,684	13%

Source: EMSAS Fall Enrollment file

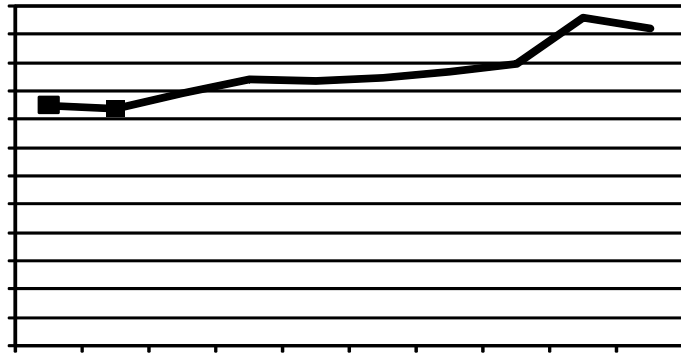


**Table 2.3 Headcounts, Full-time Equivalence, and Student Credit Hours by Location, Fall 2005 to Fall 2009**

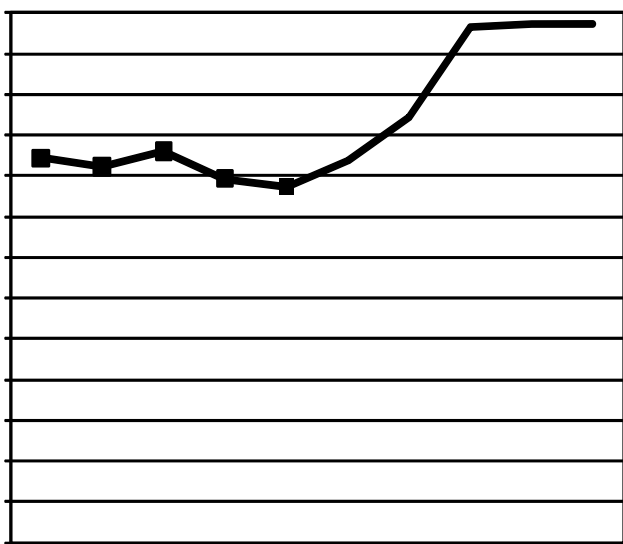
	FS05	FS06	FS07	FS08	FS09	FS05	FS06	FS07	FS08	FS09	FS05	FS06	FS07	FS08	FS09	5-yr. Change
Headcount by Student Level																
<b>Undergraduate</b>																
Fresh & Soph DS	1,915	1,993	2,127	2,180	2,291	0	0	0	0	13	1,915	1,993	2,127	29		

**Table 2.4 Headcounts, Full-time Equivalence, and Student Credit Hours by Location, Fall 2005 to Fall 2009**

	FS05	FS06	FS07	FS08	FS09	FS05	FS06	FS07	FS08	FS09	FS05	FS06	FS07	FS08	FS09	5-yr. Change
<b>Headcount by Student Level</b>																
<b>Undergraduate</b>																
Fresh & Soph DS	2,164	2,196	2,133	2,452	2,347	10	5	3	6	8	2,174	2,201	2,136	2,458	2,355	8%
Junior & Senior DS	6,930	6,629	6,757	6,140	6,494	45	42	53	80	80	6,975	6,671	6,810	6,220	6,574	-6%
Nondegree	<u>236</u>	<u>257</u>	<u>267</u>	<u>301</u>	<u>310</u>	<u>3,221</u>	<u>3,330</u>	<u>3,219</u>	<u>3,379</u>	<u>3,727</u>	<u>3,457</u>	<u>3,587</u>	<u>3,486</u>	<u>3,680</u>	<u>4,037</u>	17%
Total Undergraduate	9,330	9,082	9,157	8,893	9,151	3,276	3,377	3,275	3,465	3,815	12,606	12,459	12,432	12,358	12,966	3%
<b>First Professional</b>																
Optometry (OD)	<u>164</u>	<u>173</u>	<u>171</u>	<u>178</u>	<u>179</u>						<u>164</u>	<u>173</u>	<u>171</u>	<u>178</u>	<u>179</u>	9%
Total First Professional	164	173	171	178	179	0	0	0	0	0	164	173	171	178	179	9%
<b>Graduate</b>																
Masters & Ed. Spec.	2,097	2,185	2,172	2,175	2,270	97	86	101	240	311	2,194	2,271	2,273	2,415	2,581	18%
Doctoral	466	497	518	506	537	19	18	10	13	16	485	515	528	519	553	14%
Nondegree	<u>73</u>	<u>90</u>	<u>113</u>	<u>150</u>	<u>167</u>	<u>26</u>	<u>20</u>	<u>10</u>	<u>121</u>	<u>88</u>	<u>99</u>	<u>110</u>	<u>123</u>	<u>271</u>	<u>255</u>	158%
Total Graduate	2,636	2,772	2,803	2,831	2,974	142	124	121	374	415	2,778	2,896	2,924	3,205	3,389	22%
<b>Grand Total</b>																
<b>Headcount</b>	12,130	12,027	12,131	11,902	12,304	3,418	3,501	3,396	3,839	4,230	15,548	15,528	15,527	15,741	16,534	6%
<b>FTE Enrollments by Student Level</b>																
Undergraduate	6,752	6,634.3	6,696.3	6,558.2	6,779.8	1,195	1,238.2	1,215.7	1,255.3	1,392.3	7,947	7,873	7,912	7,814	8,172	3%
First Professional	164	173.0	171.0	178.0	179.0	0	0.0	0.0	0.0	0.0	164	173	171	178	179	9%
Graduate	<u>1,296</u>	<u>1,377.0</u>	<u>1,420.9</u>	<u>1,433.8</u>	<u>1,498.2</u>	<u>46</u>	<u>45.0</u>	<u>43.0</u>	<u>153.1</u>	<u>182.4</u>	<u>1,341</u>	<u>1,422</u>	<u>1,464</u>	<u>1,587</u>	<u>1,681</u>	25%
Total FTE	8,211	8,184.3	8,288.2	8,170.0	8,457.0	1,241	1,283.2	1,258.7	1,408.4	1,574.7	9,451.9	9,467.5	9,546.9	9,578.4	10,031.8	6%
<b>SCH Produced by Student Level</b>																
Undergraduate	101,276	99,515	100,444	98,373	101,697	17,922	18,573	18,235	18,830	20,885	119,198	118,088	118,679	117,203	122,582	3%
First Professional	3,339	3,429	3,506	3,566	3,671	0	0	0	0	0	3,339	3,429	3,506	3,566	3,671	10%
Graduate	<u>15,547</u>	<u>16,524</u>	<u>17,051</u>	<u>17,203</u>	<u>17,979</u>	<u>549</u>	<u>540</u>	<u>516</u>	<u>1,837</u>	<u>2,189</u>	<u>16,096</u>	<u>17,064</u>	<u>17,567</u>			







---

---

---

---

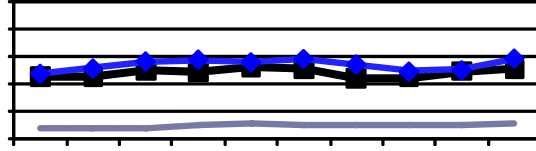
---

**Table 3. On-Campus New Student Headcount, Fall 2005 - Fall 2009**

		2005	2006	2007	2008	2009	5 yr. Change
<b>Columbia</b>							
<b>Freshmen</b>							
	Degree-Seeking	4,718	4,836	4,980	5,780	5,589	18%
	Non Degree-Seeking	2	6	1	0	0	-100%
<b>Undergraduate Transfers</b>							
	Degree-Seeking	1,178	1,030	986	1,077	1,108	-6%
	Non Degree-Seeking	103	78	130	153	157	52%
<b>Professional</b>							
	Degree-Seeking	329	338	328	334	368	12%
<b>Graduate</b>							
	Degree-Seeking	841	940	1,142	1,167	1,169	39%
	Non Degree-Seeking	98	106	124	107	103	5%
<b>Kansas City</b>							
<b>Freshmen</b>							
	Degree-Seeking	1,039	955	959	1,008	1,004	-3%
	Non Degree-Seeking	9	4	0	0	3	-67%
<b>Undergraduate Transfers</b>							
	Degree-Seeking	1,302	1,176	1,192	1,238	1,449	11%
	Non Degree-Seeking	141	167	22	0	1	-99%
<b>Professional</b>							
	Degree-Seeking	361	361	462	447	481	33%
	Non Degree-Seeking	0	0	3	2	4	
<b>Graduate</b>							
	Degree-Seeking	801	768	973	1,005	1,004	25%
	Non Degree-Seeking	81	58	0	0	1	-99%
<b>Missouri S&amp;T</b>							
<b>Freshmen</b>							
	Degree-Seeking	884	962	1,041	1,045	1,108	25%
	Non Degree-Seeking	8	15	9	10	24	200%
<b>Undergraduate Transfers</b>							
	Degree-Seeking	273	248	264	272	292	7%
	Non Degree-Seeking	5	4	0	2	1	-80%
<b>Graduate</b>							
	Degree-Seeking	225	242	243	244	289	28%
	Non Degree-Seeking	3	9	7	1	1	-67%
<b>St Louis</b>							
<b>Freshmen</b>							
	Degree-Seeking	531	525	498	468	525	-1%
	Non Degree-Seeking	5	5	4	11	2	-60%
<b>Undergraduate Transfers</b>							
	Degree-Seeking	1,762	1,763	1,852	1,667	1,673	-5%
	Non Degree-Seeking	150	159	180	179	172	15%
<b>Professional</b>							
	Degree-Seeking	44	45	45	48	44	0%
<b>Graduate</b>							
	Degree-Seeking	576	621	583	685	750	30%
	Non Degree-Seeking	27	53	69	51	42	56%

Source: EMSAS Fall Enrollment file

IR&P/LCB 10/09



<b>Level</b>	<b>2005</b>	<b>2006</b>	<b>2007</b>	<b>2008</b>	<b>2009</b>	<b>5 yr. Change</b>
Undergraduate						
Freshman & Soph DS	13,482	13,412	13,504	14,380	14,514	8%
Junior & Senior DS	16,017	16,335	16,378	16,556	17,441	9%
Nondegree	117	124	138	130	126	8%
Total System Full-time Resident Undergraduate	29,616	29,871	30,020	31,066	32,081	8%
First Professional						
Dentistry						

**Table 4.0b Non-Resident Headcount History by Student Level, Load, and Campus, Fall 2005 to Fall 2009**

<b>Level</b>	<b>2005</b>	<b>2006</b>	<b>2007</b>	<b>2008</b>	<b>2009</b>	<b>5 yr. Change</b>
Undergraduate						
Freshman & Soph DS	2,988	3,051	3,191	3,649	4,119	38%
Junior & Senior DS	2,724	2,786	2,817	2,954	3,128	15%
Nondegree	92	96	111	151	142	54%
Total System Full-time Non-Resident Undergraduate						

**Table 4.1a Resident Headcount History by Student Level, Load, and Campus, Fall 2005 to Fall 2009**

<b>Level</b>	<b>2005</b>	<b>2006</b>	<b>2007</b>	<b>2008</b>	<b>2009</b>	<b>5 yr. Change</b>
Undergraduate						
Freshman & Soph DS	8,552	8,463	8,438	9,079	9,099	6%
Junior & Senior DS	8,504	8,845	8,769	8,967	9,294	9%
Nondegree	3	1	9	2	2	-33%
Total MU Full-time Resident Undergraduate	17,059	17,309	17,216	18,048	18,395	8%
First Professional						
Law (JD)	415	404	404	398	409	-1%
Medicine (MD)	274	364	370	375	375	37%
Vet. Med						

**Table 4.1b Non-Resident Headcount History by Student Level, Load, and Campus, Fall 2005 to Fall 2009**

<b>Level</b>	<b>2005</b>	<b>2006</b>	<b>2007</b>	<b>2008</b>	<b>2009</b>	<b>5 yr. Change</b>
Undergraduate						
Freshman & Soph DS	1,803	1,790	1,864	2,265	2,658	47%
Junior & Senior DS	1,074	1,094	1,169	1,249	1,274	19%
Nondegree	29	32	35	49	44	52%
Total MU Full-time Non-Resident Undergraduate	2,906	2,916	3,068	3,563	3,976	37%
First Professional						
Law (JD)	20	38	38	40	31	55%
Medicine (MD)	7	10	5	12	10	43%
Vet. Med (DVM)	18	14	23	27	57	217%
Total MU Full-time Non-Resident 1st Professional	45	62	66	79	98	118%
Graduate						
Masters & Ed. Spec.	588	646	664	678	714	21%
Doctoral	648	643	626	671	709	9%
Nondegree	23	26	21	25	17	-26%
Total MU Full-time Non-Resident Graduate	1,259	1,315	1,311	1,374	1,440	14%
Total MU Full-time Non-Resident Headcount	4,210	4,293	4,445	5,016	5,514	31%

U



**Table 4.2a Resident Headcount History by Student Level, Load, and Campus, Fall 2005 to Fall 2009**

<b>Level</b>	<b>2005</b>	<b>2006</b>	<b>2007</b>	<b>2008</b>	<b>2009</b>	<b>5 yr. Change</b>
Undergraduate						
Freshman & Soph DS	1,956	1,948	1,962	1,987	2,067	6%
Junior & Senior DS	2,215	2,144	2,035	2,226	2,421	9%
Nondegree	17	10	27	17	6	-65%
Total UMKC Full-time Resident Undergraduate	4,188	4,102	4,024	4,230	4,494	7%
First Professional						
Dentistry (DDS)	239	252	265	276	286	20%
Law (JD)	389	374	367	378	388	0%
Medicine (MD)	259	247	271	277	274	6%

**Table 4.2b Non-Resident Headcount History by Student Level, Load, and Campus, Fall 2005 to Fall 2009**

<b>Level</b>	<b>2005</b>	<b>2006</b>	<b>2007</b>	<b>2008</b>	<b>2009</b>	<b>5 yr. Change</b>
Undergraduate						
Freshman & Soph DS	597	627	650	658	712	19%
Junior & Senior DS	878	941	839	933	1,012	15%
Nondegree	13	17	24	41	46	254%
Total UMKC Full-time Non-Resident Undergraduate	1,488	1,585	1,513	1,632	1,770	19%
First Professional						
Dentistry (DDS)	149	141	136	123	115	-23%
Law (JD)	123	113	99	86	81	-34%
Medicine (MD)	105	116	113	103	110	5%
Pharmacy (Dpharm)	15	13	13	20	19	27%
Total UMKC Full-time Non-Resident 1st Professional	392	383	361	332	325	-17%
Graduate						
Masters & Ed. Spec.	444	512	549	580	556	25%
Doctoral	99	100	105	152	150	52%
Nondegree	0	5	1	2	6	
Total UMKC Full-time Non-Resident Graduate	543	617	655	734	712	31%
Total UMKC Full-time Non-Resident Headcount	2,423	2,585	2,529	2,698	2,807	16%
Undergraduate						
Freshman & Soph DS	72	69	126	93	77	7%
Junior & Senior DS	315	311	291	318	345	10%
Nondegree	111	147	71	94	109	-3%



**Table 4.3b Non-Resident Headcount History by Student Level, Load, and Campus, Fall 2005 to Fall 2009**

<b>Level</b>	<b>2005</b>	<b>2006</b>	<b>2007</b>	<b>2008</b>	<b>2009</b>	<b>5 yr. Change</b>
Undergraduate						
Freshman & Soph DS	395	406	446	459	463	17%
Junior						

**Table 4.4a Resident Headcount History by Student Level, Load, and Campus, Fall 2005 to Fall 2009**

<b>Level</b>	<b>2005</b>	<b>2006</b>	<b>2007</b>	<b>2008</b>	<b>2009</b>	<b>5 yr. Change</b>
<b>UNIVERSITY OF MISSOURI-ST. LOUIS FULL-TIME RESIDENT HEADCOUNT</b>						
Undergraduate						
Freshman & Soph DS	1,521	1,504	1,497	1,664	1,588	4%
Junior & Senior DS	3,621	3,521	3,651	3,351	3,612	0%
Nondegree	91	107	101	107	117	29%
Total UMSL Full-time Resident Undergraduate	5,233	5,132	5,249	5,122	5,317	2%
First Professional						
Optometry (OD)	87	83	86	89	86	-1%
Total UMSL Full-time Resident 1st Professional	87	83	86	89	86	-1%
Graduate						
Masters & Ed. Spec.	381	361	401	429	470	23%
Doctoral	48	65	59	59	59	23%
Nondegree	8	4	16	16	21	163%
Total UMSL Full-time Resident Graduate	437	430	476	504	550	26%
Total UMSL Full-time Resident Headcount	5,757	5,645	5,811	5,715	5,953	3%
<b>UNIVERSITY OF MISSOURI-ST. LOUIS PART-TIME RESIDENT HEADCOUNT</b>						
Undergraduate						
Freshman & Soph DS	428	437	379	499	462	8%
Junior & Senior DS	2,767	2,593	2,570	2,358	2,422	-12%
Nondegree	3,271	3,397	3,305	3,483	3,845	18%
Total UMSL Part-time Resident Undergraduate	6,466	6,427	6,254	6,340	6,729	4%
First Professional						
Optometry (OD)	0	0	0	0	0	
Total UMSL Part-time Resident 1st Professional	0	0	0	0	0	
Graduate						
Masters & Ed. Spec.	1,559	1,578	1,522	1,607	1,773	14%
Doctoral	255	260	282	291	321	26%
Nondegree	79	93	93	195	211	167%
Total UMSL Part-time Resident Graduate	1,893	1,931	1,897	2,093	2,305	22%
Total UMSL Part-time Resident Headcount	8,359	8,358	8,151	8,433	9,034	8%
<b>UNIVERSITY OF MISSOURI-ST. LOUIS TOTAL RESIDENT HEADCOUNT</b>						
Undergraduate						
Freshman & Soph DS	1,949	1,941	1,876	2,163	2,050	5%
Junior & Senior DS	6,388	6,114	6,221	5,709	6,034	-6%
Nondegree	3,362	3,504	3,406	3,590	3,962	18%
Total UMSL Resident Undergraduate	11,699	11,559	11,503	11,462	12,046	3%
First Professional						
Optometry (OD)	87	83	86	89	86	-1%
Total UMSL Resident 1st Professional	87	83	86	89	86	-1%
Graduate						
Masters & Ed. Spec.	1,940	1,939	1,923	2,036	2,243	16%
Doctoral	303	325	341	350	380	25%
Nondegree	87	97	109	211	232	167%
Total UMSL Resident Graduate	2,330	2,361	2,373	2,597	2,855	23%
Grand Total UMSL Resident Headcount	14,116	14,003	13,962	14,148	14,987	6%

**Table 4.4b Non-Resident Headcount History by Student Level, Load, and Campus, Fall 2005 to Fall 2009**

<b>Level</b>	<b>2005</b>	<b>2006</b>	<b>2007</b>	<b>2008</b>	<b>2009</b>	<b>5 yr. Change</b>
Undergraduate						
Freshman & Soph DS	193	228	231	267	286	48%
Junior & Senior DS	415	387	412	353	383	-8%
Nondegree	46	47	51	57	42	-9%
Total UMSL Full-time Non-Resident Undergraduate	654	662	694	677	711	9%
First Professional						
Optometry (OD)	77	90	85	89	93	21%

**Table 5. Headcount Students by Gender and Ethnicity**

<b>Data - Classification</b>	<b><u>MU</u></b>		<b><u>UMKC</u></b>		<b><u>MO S&amp;T</u></b>		<b><u>UMSL</u></b>		<b><u>TOTAL</u></b>	
	<b>HC</b>	<b>%</b>	<b>HC</b>	<b>%</b>	<b>HC</b>	<b>%</b>	<b>HC</b>	<b>%</b>	<b>HC</b>	<b>%</b>
<b>A. Gender</b>										
Men										
First-time DS Freshmen	2,583	46%	379	38%	848	77%	209	40%	4,019	49%
Other Undergraduate	8,853	49%	3,527	42%	3,197	78%	4,848	39%	20,425	47%
First Professional	541	47%	827	51%	0	-	77	43%	1,445	49%
Graduate	<u>2,546</u>	40%	<u>1,634</u>	43%	<u>1,285</u>	80%	<u>1,177</u>	35%	<u>6,642</u>	44%
Total	14,523	46%	6,367	43%	5,330	78%	6,311	38%	32,531	47%
Women										
First-time DS Freshmen	3,006	54%	625	62%	260	23%	316	60%	4,207	51%
Other Undergraduate	9,357	51%	4,850	58%	901	22%	7,593	61%	22,701	53%
First Professional	609	53%	784	49%	0	-	102	57%	1,495	51%
Graduate	<u>3,742</u>	60%	<u>2,173</u>	57%	<u>323</u>	20%	<u>2,212</u>	65%	<u>8,450</u>	56%
Total	16,714	54%	8,432	57%	1,484	22%	10,223	62%	36,853	53%
<b>Grand Total</b>	<b>31,237</b>		<b>14,799</b>		<b>6,814</b>		<b>16,534</b>		<b>69,384</b>	

**Table 5. Headcount Students by Gender and Ethnicity (continued)**